

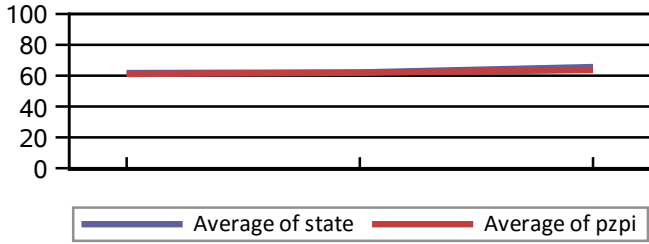
Student Academic Performance in the Proximal Zone of Professional Impact

STAAR Performance¹ Summary

High Schools

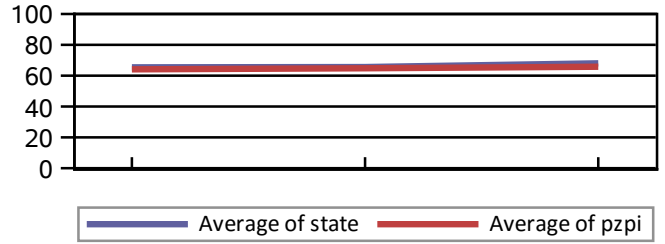
Stephen F. Austin State University

English I



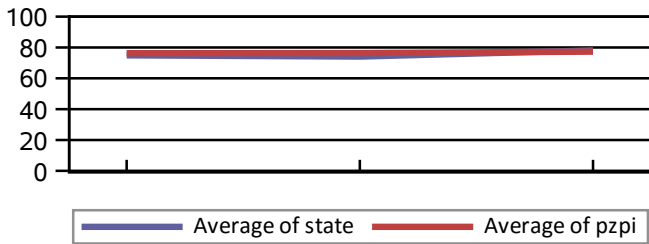
	2014	2015	2016
PZPI	61.1	61.9	63.7
State	61.7	62.1	65.6

English II



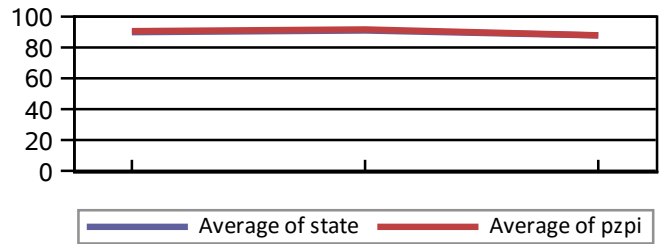
	2014	2015	2016
PZPI	64.1	64.8	65.8
State	65.4	65.6	68.0

Algebra I



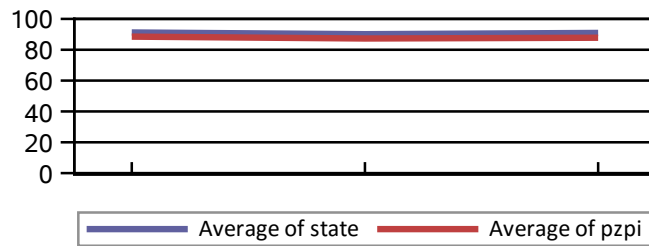
	2014	2015	2016
PZPI	76.3	76.4	77.3
State	74.9	74.1	78.1

Biology



	2014	2015	2016
PZPI	90.6	91.7	87.9
State	89.9	91.0	87.8

US History



	2014	2015	2016
PZPI	88.5	87.3	87.8
State	91.2	90.1	90.9

¹Cut scores used to determine the performance standard for STAAR percent passing at satisfactory level or above increase each year.

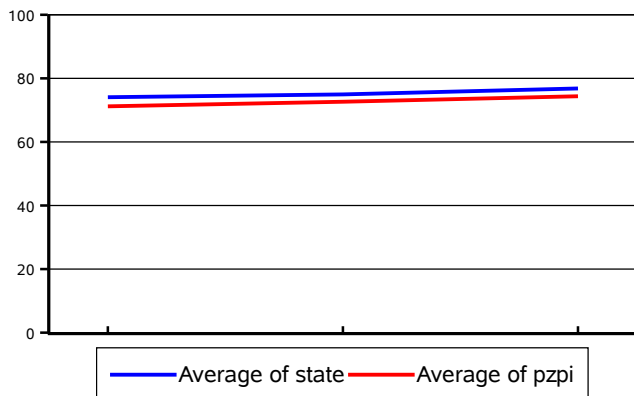
Student Academic Performance in the Proximal Zone of Professional Impact

STAAR Performance¹ Summary

Elementary Schools

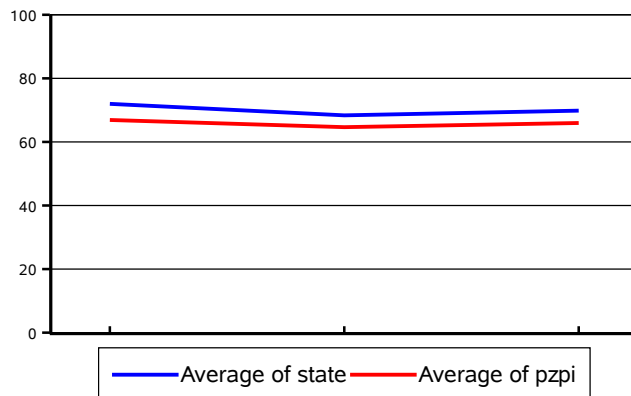
Stephen F. Austin State University

Reading



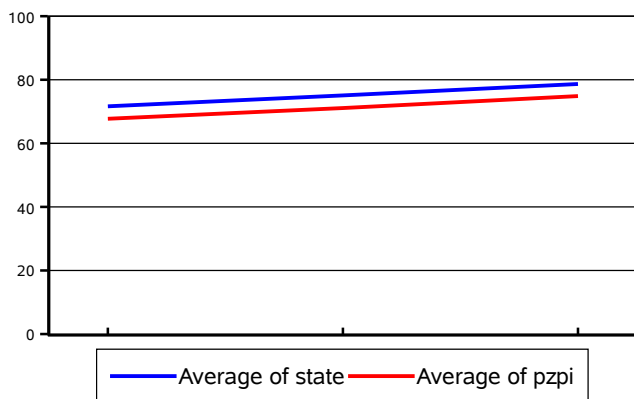
	2014	2015	2016
PZPI	71.2	72.6	74.4
State	74.1	74.9	76.8

Writing



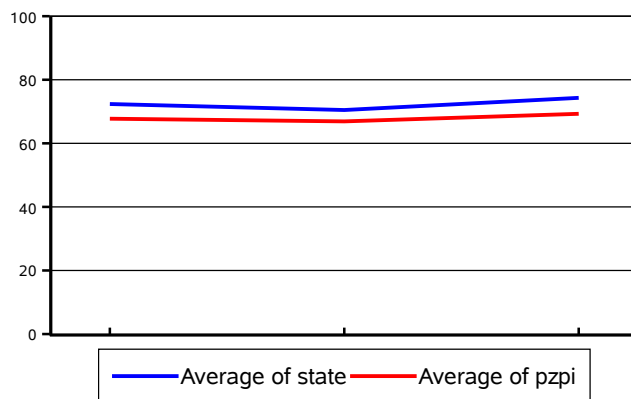
	2014	2015	2016
PZPI	66.9	64.6	66.0
State	72.0	68.4	69.8

Mathematics



	2014	2015	2016
PZPI	67.7	71.1	74.9
State	71.6	75.1	78.7

Science



	2014	2015	2016
PZPI	67.7	66.9	69.3
State	72.4	70.5	74.3

¹STAAR percent passing at satisfactory level or above aggregated by subject and grade for campuses designated by the state as elementary. Cut scores used to determine the satisfactory or above performance standard increase each year.

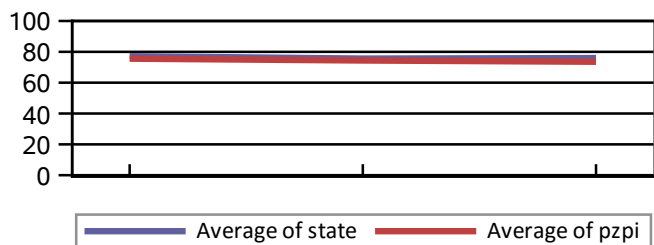
Student Academic Performance in the Proximal Zone of Professional Impact

STAAR Performance¹ Summary

Middle Schools

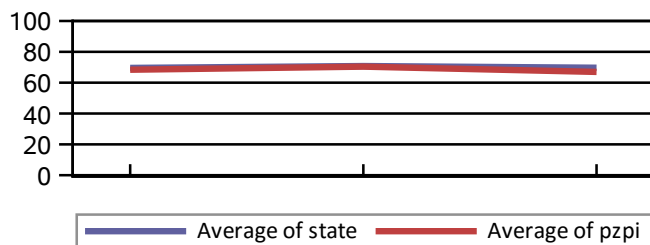
Stephen F. Austin State University

Reading



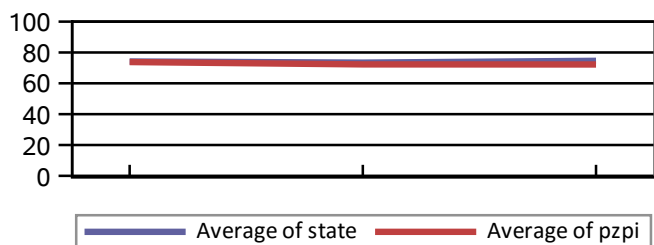
	2014	2015	2016
PZPI	75.6	74.4	73.6
State	77.2	75.6	76.0

Writing



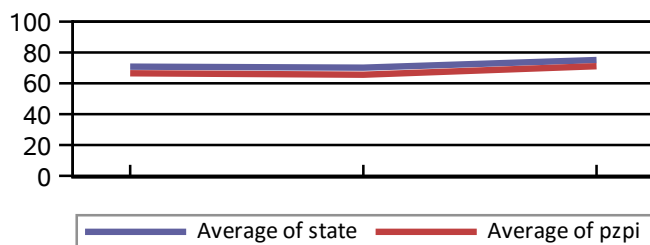
	2014	2015	2016
PZPI	68.4	70.4	67.0
State	69.6	70.8	69.7

Mathematics



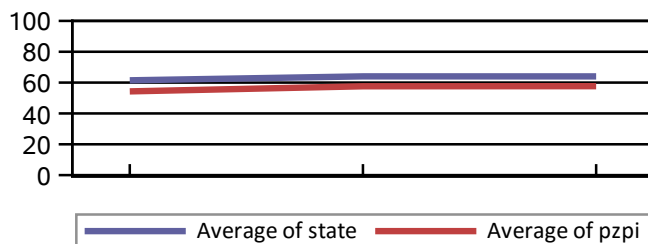
	2014	2015	2016
PZPI	73.8	72.3	72.2
State	74.2	73.4	74.6

Science



	2014	2015	2016
PZPI	66.5	65.6	71.1
State	70.8	70.2	75.1

Social Studies



	2014	2015	2016
PZPI	54.3	57.6	57.7
State	61.5	64.0	64.0

¹STAAR percent passing at satisfactory level or above aggregated by subject and grade for campuses designated by the state as middle level. Cut scores used to determine the satisfactory or above performance standard increase each year.